

# Fairway

HOLIDAY PARK

[www.fairwayholidaypark.co.uk](http://www.fairwayholidaypark.co.uk)



Sandown, Isle of Wight PO36 9PS  
Telephone: 01983 403 462 Fax: 01983 405 713  
Email: [enquiries@fairwayholidaypark.co.uk](mailto:enquiries@fairwayholidaypark.co.uk)

Fairway Holiday Park is a trading name of  
CJW Holdings Ltd. (Company Reg. No. 3213242)



Welcome to...

# Fairway

HOLIDAY PARK

Fairway Holiday Park is situated in Sandown, on the beautiful Isle of Wight. The island itself is acknowledged as being one of the sunniest places in Britain with magnificent beaches and breathtaking scenery - the ideal setting for a carefree, relaxing holiday.



We are ideally situated to explore the whole Island. For those of you who enjoy the beach, Sandown Bay is only a 25 minutes walk away. The bay boasts one of the most glorious sandy beaches on the Island and is ideal for children.

We have a wide range of caravans to choose from so whatever your budget, we are sure we have a caravan that will suit your requirements.

We are a relatively small holiday park with a relaxed atmosphere making us most suitable for couples and families with younger children.

No matter how you spend your holiday, Fairway Holiday Park will make it one of your best, with plenty to do and see on this fabulous island. To ensure YOUR choice of holiday date we suggest you make your booking early.



A PROVISIONAL BOOKING may be taken and held for SEVEN DAYS only. Our friendly reception staff will be pleased to offer any advice or answer any query - just telephone 01983 403 462 DURING OFFICE HOURS.

Alternatively, you can book safely and securely online at [www.fairwayholidaypark.co.uk](http://www.fairwayholidaypark.co.uk).

## Accommodation

All our caravans are connected to mains electricity, gas and water. They have gas fires in the main living area and an electric heater in the master bedroom (except the Budget styles, which have an electric heater in both the living area and master bedroom).

All our caravans are fitted with toilets, showers, fridges, gas cookers and colour televisions. We also provide pots and pans, cutlery and crockery and a kettle (not electric). Microwave ovens are included in all caravans except the Budget styles.

Duvets and covers, pillows and slippers are provided. You will need to bring bottom sheets for all beds and pillowslips for the dining area double bed.

### Yarmouth 8 Berth (2007) – Non-Smoking

1 double bedroom, 2 twin bedrooms plus make up double bed in living area.

Prices from £67 a night. The minimum period of hire is 3 nights. During the Summer peak weeks, further restrictions may apply.

Floor plan:

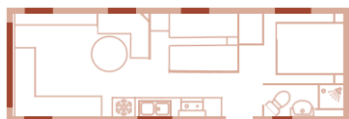


### Yarmouth 6 Berth (2008) – Non-Smoking

1 double bedroom, 1 twin bedroom plus make up double bed in living area.

Prices from £53 a night. The minimum period of hire is 3 nights. During the Summer peak weeks, further restrictions may apply.

Floor plan:



### Carisbrooke 8 Berth (2005)

1 double bedroom, 2 twin bedrooms plus make up double bed in living area.

Prices from £60 a night. The minimum period of hire is 3 nights. During the Summer peak weeks, further restrictions may apply.

Floor plan:



### Carisbrooke 6 Berth (2004)

1 double bedroom, 1 twin bedroom plus make up double bed in living area.

Prices from £46 a night. The minimum period of hire is 3 nights. During the Summer peak weeks, further restrictions may apply.

Floor plan:



### Whippingham 6 Berth (2003/2005)

1 double bedroom, 1 twin bedroom plus make up double bed in living area.

Prices from £37 a night. The minimum period of hire is 3 nights. During the Summer peak weeks, further restrictions may apply.

Floor plans:



### Bembridge 6 Berth (2000/2001)

1 double bedroom, 1 twin bedroom plus make up double bed in living area.

Prices from £30 a night. The minimum period of hire is 3 nights. During the Summer peak weeks, further restrictions may apply.

Floor plans:



### Haseley 6 Berth (Over 15 Years Old)

1 double bedroom, 1 twin bedroom plus make up double bed in living area.

Prices from £23 a night. The minimum period of hire is 3 nights. During the Summer peak weeks, further restrictions may apply.

Please note, these are our oldest caravans and have sustained **considerable wear and tear.**



## For your ideal summer holiday we offer:

### Clubhouse

Free entertainment (every evening, during high season/peak times only) from our resident entertainer. Cafeteria and take-away, licensed bar, pool tables and amusement arcade.

Clubhouse membership is included in the price of your caravan.

### Swimming Pool

Outdoor heated swimming pool open May to September.

### Children's Play Area

With swings, slide, roundabout and rocking horse.

### Launderette

Equipped with washing machines, tumble dryers and ironing facilities.

### Telephone

Public telephone kiosk on site.

### Shops

Spar shop, selling groceries, opposite our entrance.

### Transport

Our own taxi service, Wight Cabs, can be booked via reception or by phoning 01983 867 474.

Local amenities and attractions within Sandown include:

- Sandown railway station.
- Sandown beach, Pier and High street (25 minute walk).
- Sports complex with indoor heated swimming pool.
- The Isle of Wight Zoo, which specialises in the care and conservation of big cats and Madagascan animals (40 minute walk).
- Dinosaur Isle, Britain's first purpose built dinosaur museum (40 minute walk).
- Sandham Grounds – go-karting track, children's play areas, crazy golf and skate park (25 minute walk).



## Holiday Home Ownership

Owning your own holiday home couldn't be simpler and there has never been a better time to join the many families who enjoy holiday home ownership here at Fairway's Phase 2 Development.

We have a selection of pre owned caravans and also luxury new ones. There are also a limited number of luxury lodges available.



There are four simple steps to owning your own holiday home:



- Decide if the running costs meet with your approval.
- Is Fairway right for you and your family and do the facilities meet your requirements?
- Select the caravan that suits your needs and budget.
- When purchasing a new caravan select the pitch where you would like the caravan

sited. Pre-owned caravans are already sited.

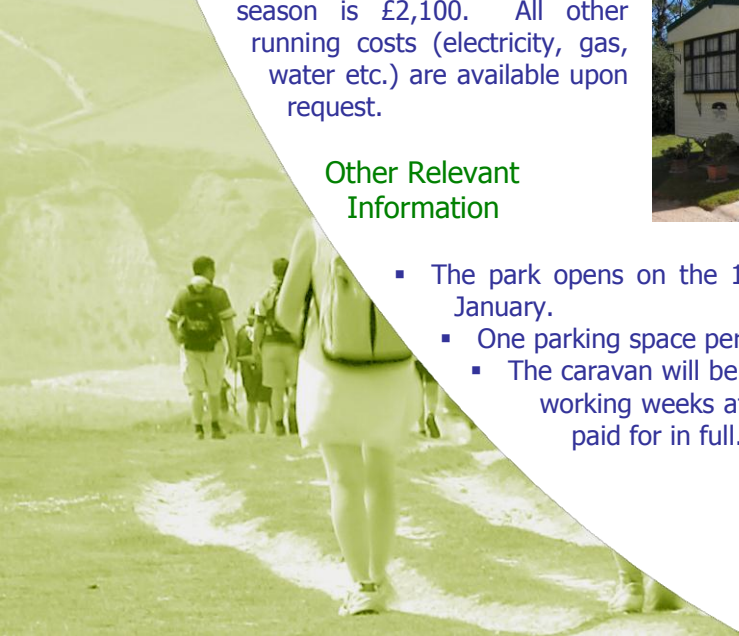
### Ground Rent

The ground rent for the 2012 season is £2,100. All other running costs (electricity, gas, water etc.) are available upon request.



### Other Relevant Information

- The park opens on the 1st March and closes 3rd January.
- One parking space per caravan.
- The caravan will be commissioned within two working weeks after the caravan has been paid for in full.





## Useful Travel Information

### Red Funnel

Southampton to Cowes  
(High Speed Passenger Only Service or Passenger Vehicle Service)  
Redfunnel Travel Centre,  
12 Bugle Street, Southampton SO14 2JY  
Tel: 0844 844 9988 Fax: 0844 844 2698  
Email: [post@redfunnel.co.uk](mailto:post@redfunnel.co.uk) <http://www.redfunnel.co.uk>

### Wightlink

Lymington to Yarmouth or Portsmouth to Fishbourne  
PO BOX 59, Portsmouth PO1 2XB  
Tel: 0871 376 1000 Fax: 023 9285 5257  
Email: [bookings@wightlink.co.uk](mailto:bookings@wightlink.co.uk) <http://www.wightlink.co.uk>

### Hover Travel

Southsea (Portsmouth) to Ryde  
Quay Road, Ryde, Isle of Wight PO33 2HB  
Tel: 08434 878887 Fax: 01983 562216  
Clarence Esplanade, Southsea, Portsmouth PO5 3AD  
Tel: 08434 878887  
Email: [info@hovertravel.co.uk](mailto:info@hovertravel.co.uk) <http://www.hovertravel.co.uk>

